

Manufacturing Inspections Services

In conjunction with our Manufacturing & Test Systems Capabilities, McCormick Stevenson offers Manufacturing Inspection Services in our on-site lab facility. These services are provided with rapid turnaround time and complete documentation. By handling your dimensional inspection services needs, we are able to provide a variety of outsourcing benefits to you such as increased flexibility, quicker turnaround time, access to industry expertise, reduced labor costs and improved risk management. ISO/IEC 17025:2017, PJLA Testing Accreditation #117064

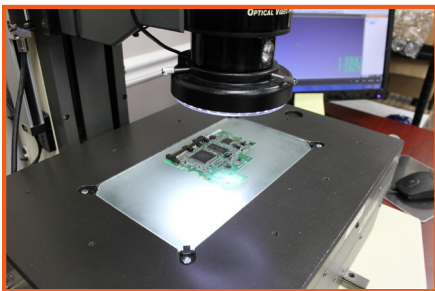
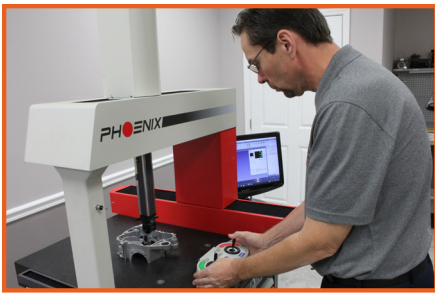
FOUNDED
IN 1999

OFFICES IN
CLEARWATER, FL

WOMAN-OWNED
SMALL BUSINESS

DOD PERSONNEL
AND FACILITY
CLEARANCES

NON-TRADITIONAL
DEFENSE CONTRACTOR



Contract Inspection

- First Article Inspection (FAI)
- Batch Inspection for Key Characteristics
- Capability Studies
- Visual Inspection and Sorting
- Source Inspection
- Turnkey Inspection Systems
- Project Management
- Reverse Engineering

Complete Outsourcing Program

- Part Inspection (rework and complete final processes as required)
- Interface with supplier regarding discrepancies and clarifications
- Packaging
- Ship to final destination

Online and Offline CMM Part Programming

- Dimensional Measuring Interface Standard (DMIS)
- Coordinate-Measuring Machine (CMM Manager)

Inspection Services Equipment

McCormick Stevenson uses state-of-the-art equipment for all our Inspection Services needs. Below are details on the various tools we use and have access to in our Manufacturing Inspection Lab.

Numerex DCC CMM (40" x 28" x 24")

- Coordinate Measuring Machine
- Volumetric Accuracy .00025"
- Renishaw PH9 Probe System
- CMM-Manager Software (Nikon)

Helmel DCC CMM (16" x 20" x 14")

- Coordinate-Measuring Machine
- Volumetric Accuracy .00020"
- Renishaw PH8 Probe System
- CMM-Manager Software (Nikon)

Standard Inspection Equipment

- Various handheld measuring tools